

Apartment D One Bedroom, One and One Half Baths

One of a kind luxury

Rising 41 stories above Sutton Place, at East 61st Street, is a luxurious, black glass tower that is becoming the City's most sought after residence.

One of a kind services

24-hour doorman and concierge services
24-hour on-site valet garage parking available
Valet services
Attended package room
Hi-tech health and fitness club available

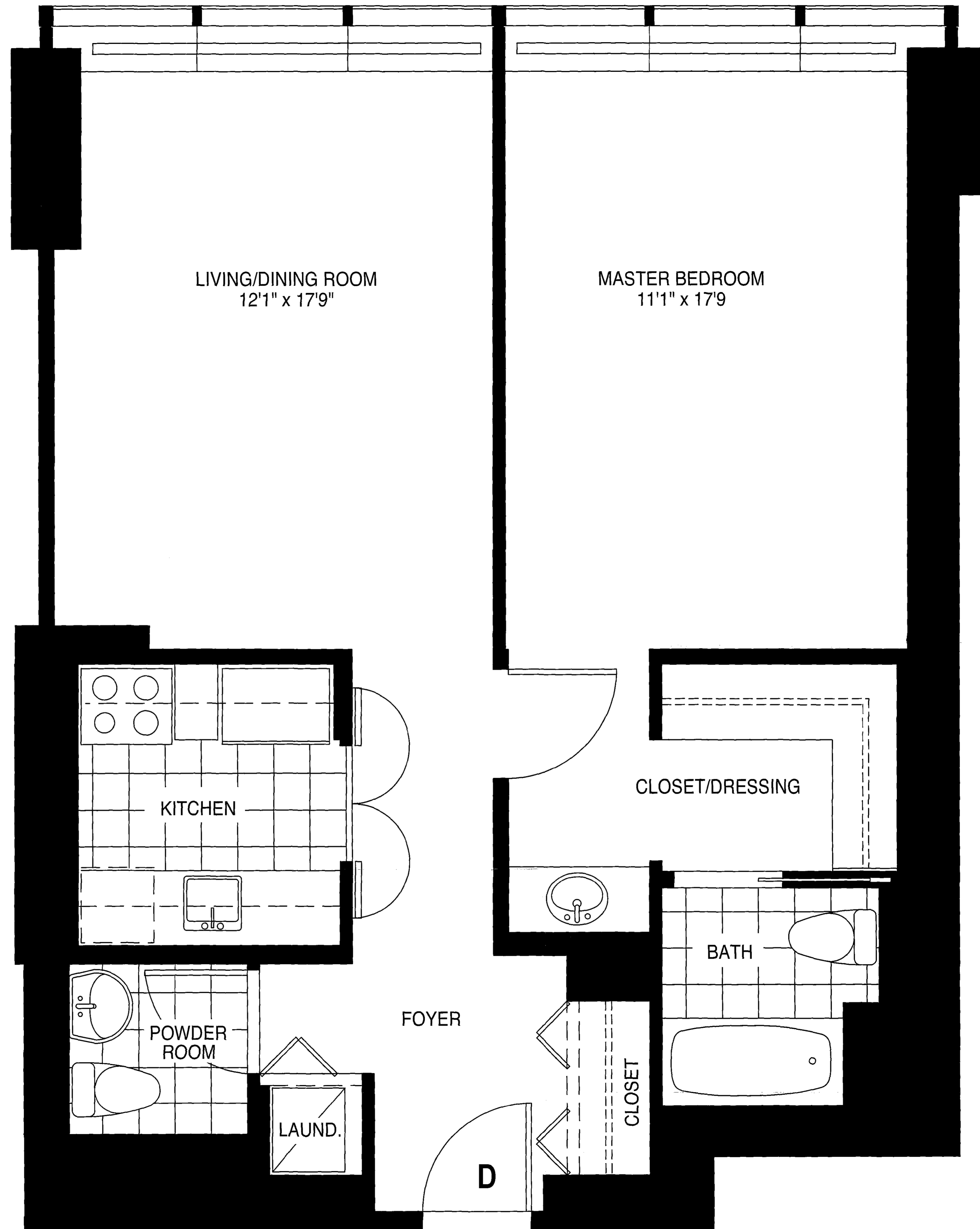
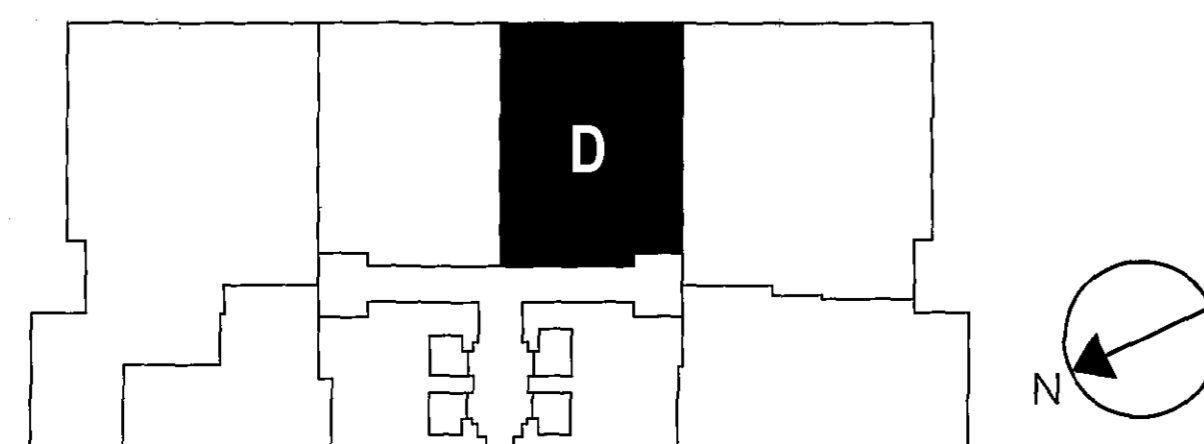
One of a kind amenities

Glass walled teak and Travertine lobby overlooking landscaped gardens
Direct lobby entry from private tree lined cobblestone driveway
English Oak and stainless steel hi-speed elevators
Floor-to-ceiling windowed elevator lobby on each floor
Flowering gardens, specimen trees and shrubs

One of a kind residences

Spectacular River and City views from floor-to-ceiling windows
Stainless steel appliances in all 1, 2 & 3 bedroom residences
Absolute Black granite kitchen floors and countertops with mirrored backsplashes
Bosch washer/dryer provided in all 1, 2 & 3 bedroom residences
Bath and powder rooms with granite floors and floor-to-ceiling marble walls
All rooms equipped with individual heating and air conditioning temperature controls
All residences wired for intranet, CATV and high-speed internet connectivity

212.829.9000
420 East 61st Street
New York, NY 10021
www.solowresidential.com



All dimensions are approximate and subject to normal variances and tolerances