

# Apartment E

## Two Bedrooms, Two Baths

### One of a kind luxury

Rising 41 stories above Sutton Place, at East 61st Street, is a luxurious, black glass tower that is becoming the City's most sought after residence.

### One of a kind services

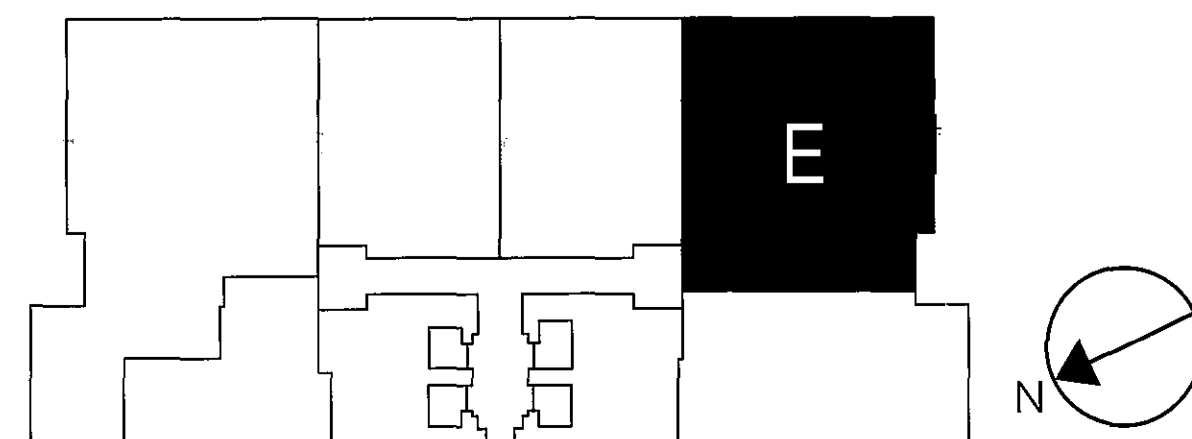
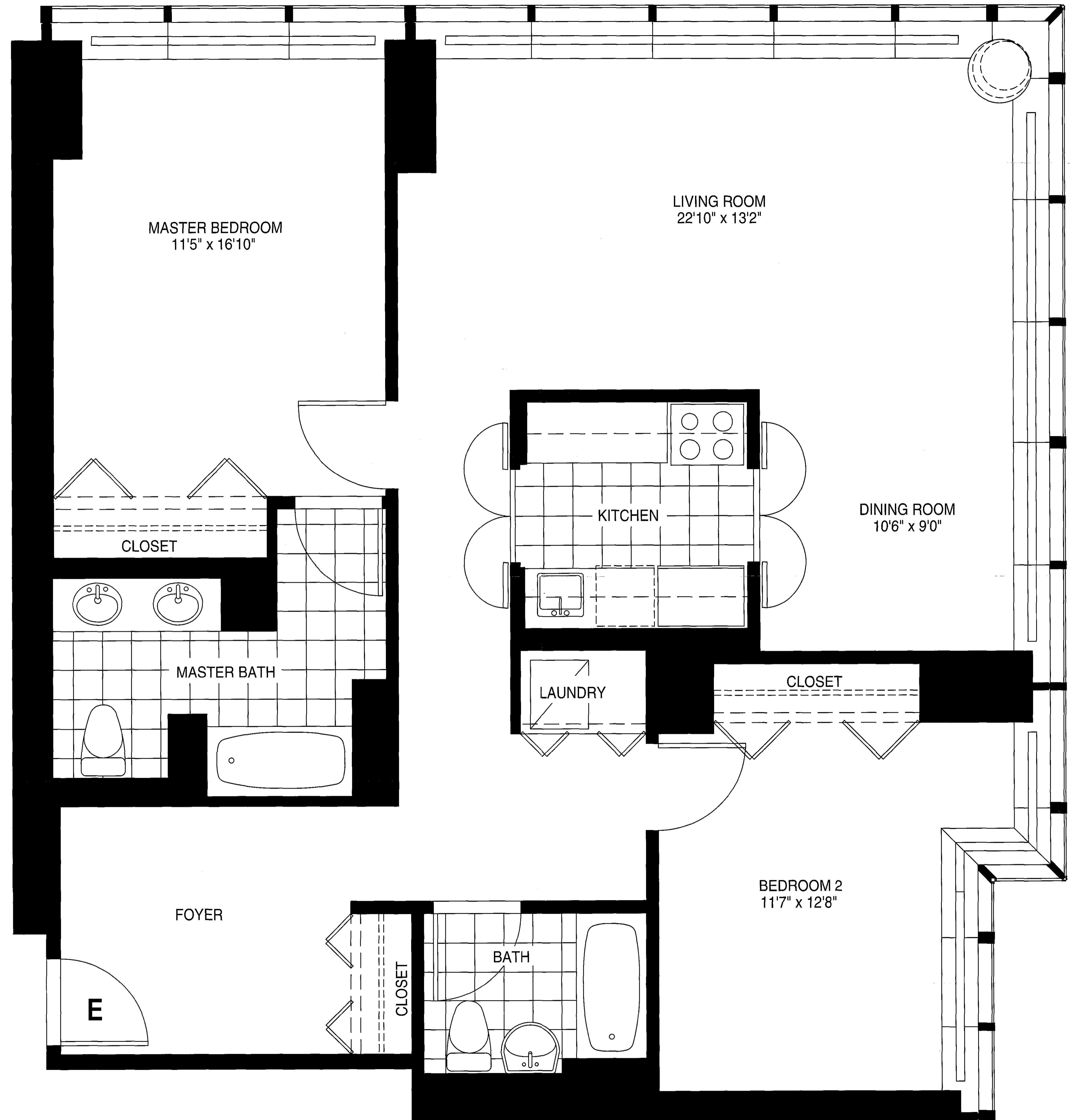
24-hour doorman and concierge services  
 24-hour on-site valet garage parking available  
 Valet services  
 Attended package room  
 Hi-tech health and fitness club available

### One of a kind amenities

Glass walled teak and Travertine lobby overlooking landscaped gardens  
 Direct lobby entry from private tree lined cobblestone driveway  
 English Oak and stainless steel hi-speed elevators  
 Floor-to-ceiling windowed elevator lobby on each floor  
 Flowering gardens, specimen trees and shrubs

### One of a kind residences

Spectacular River and City views from floor-to-ceiling windows  
 Stainless steel appliances in all 1, 2 & 3 bedroom residences  
 Absolute Black granite kitchen floors and countertops with mirrored backsplashes  
 Bosch washer/dryer provided in all 1, 2 & 3 bedroom residences  
 Bath and powder rooms with granite floors and floor-to-ceiling marble walls  
 All rooms equipped with individual heating and air conditioning temperature controls  
 All residences wired for intranet, CATV and high-speed internet connectivity



All dimensions are approximate and subject to normal variances and tolerances