

One United Nations Park

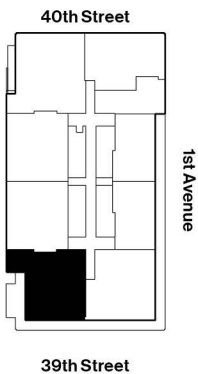
Lower Level

Residence E Duplex Floors 28 & 29

3 Bedrooms
3.5 Bathrooms

Interior
2,835 sq.ft 263 sq.m

Exterior
485 sq.ft 45 sq.m



212 685 7200 oneunpark.com
Exclusive Marketing and Sales by Corcoran Sunshine Marketing Group



THE COMPLETE OFFERING TERMS ARE IN THE OFFERING PLAN AVAILABLE FROM THE SPONSOR. FILE NO. CD17-0048. SPONSOR: 685 FIRST REALTY COMPANY, LLC (C/O SOLOW REALTY & DEVELOPMENT COMPANY), 8 WEST 57TH STREET, NEW YORK, NY 10019. PROPERTY LOCATION: 665 FIRST AVENUE, NEW YORK, NY 10016. ALL DIMENSIONS ARE APPROXIMATE AND SUBJECT TO NORMAL CONSTRUCTION VARIANCES AND TOLERANCES. PLANS AND DIMENSIONS MAY CONTAIN MINOR VARIATIONS FROM FLOOR TO FLOOR. SQUARE FOOTAGE EXCEEDS THE USABLE FLOOR AREA. FURNITURE AND ACCESSORIES DEPICTED HEREIN ARE FOR ILLUSTRATION PURPOSES ONLY.

One United Nations Park

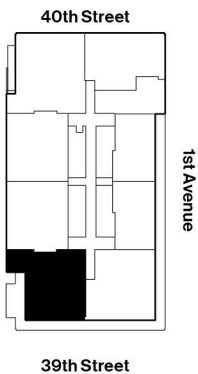
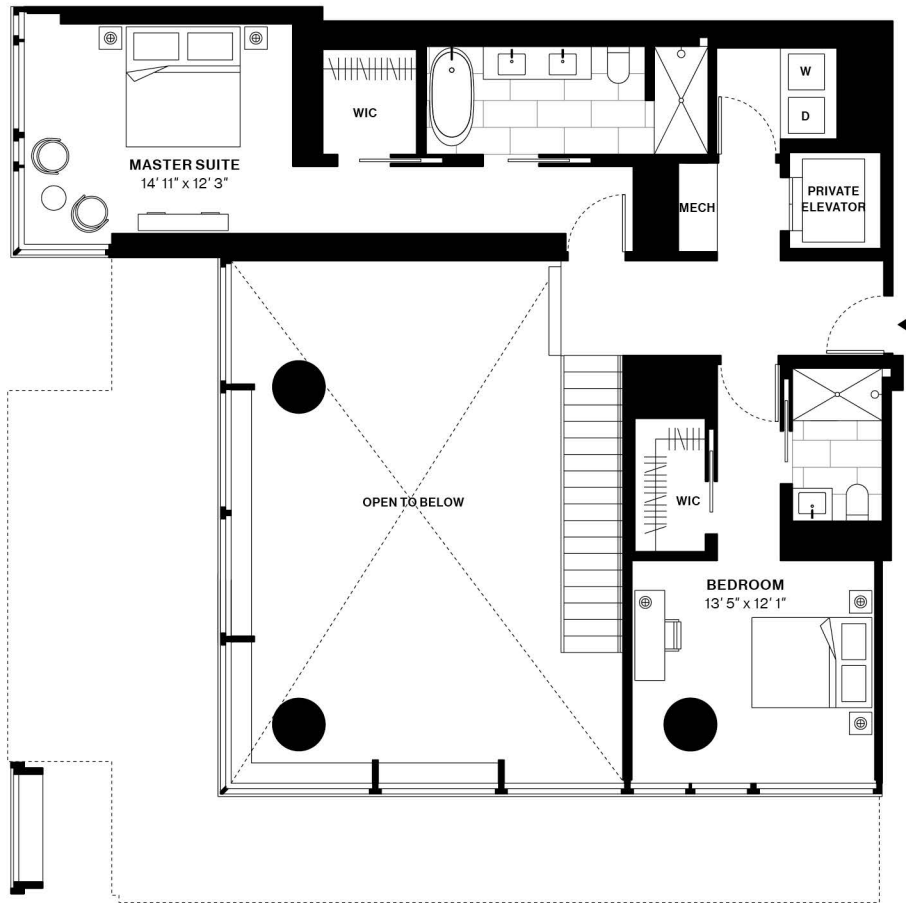
Upper Level

Residence E Duplex Floors 28 & 29

3 Bedrooms
3.5 Bathrooms

Interior
2,835 sq.ft 263 sq.m

Exterior
485 sq.ft 45 sq.m



212 685 7200 oneunpark.com
Exclusive Marketing and Sales by Corcoran Sunshine Marketing Group

