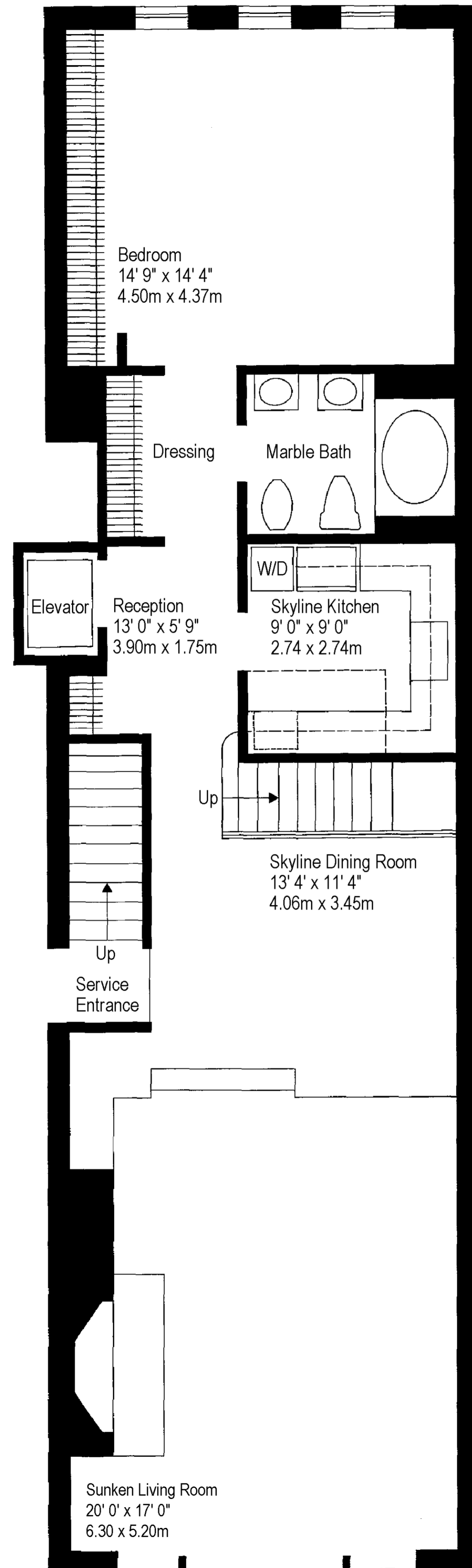


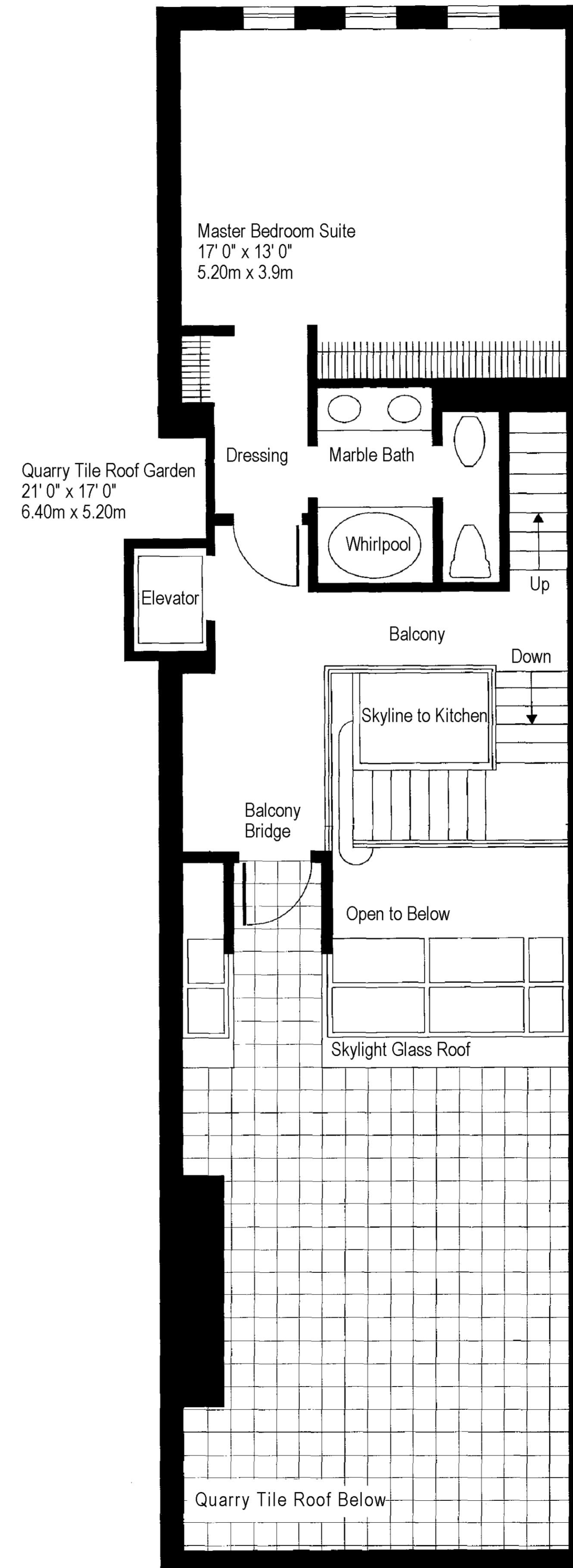
FIRST LEVEL

Central reception area leads to skylit dining room. Sunken living room has wall of windows and oversize wood-burning marble fireplace. Spacious bedroom suite with wall of closets plus dressing area. Imported marble bath with dual pedestal sinks, bidet and oval tub. Skylit kitchen with custom cabinets, generous counter space, ceramic tile floor and all deluxe appliances. Private, soundproof elevator (with phone) opens to both duplex levels.



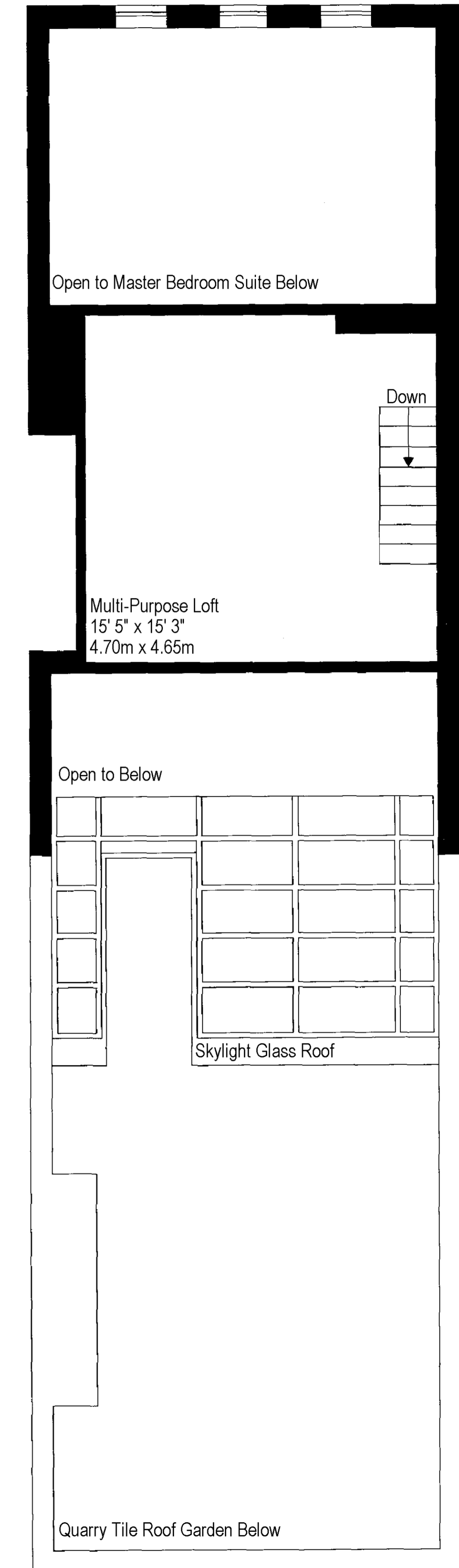
SECOND LEVEL

Innovative master suite level. Building-wide skylight glass roof floods both levels with natural light. Reception area leads to opulent master bedroom suite with 13-foot ceiling, bronze 10-foot high windows, wall of closets plus dressing area. Imported marble bath with dual pedestal sinks, oval whirlpool tub, separate water closet and bidet. Elegant balcony bridge to private, quarry-tiled rooftop garden.



LOFT LEVEL

Large multi-purpose loft to accommodate individual requirements,



THE SOLOW TOWNHOUSES
Duplex B

Floor plans represent typical duplex layout for townhouses 224, 228, 232, 236 and 240 East 67 Street. 2100+/-SquareFeet.

All dimensions are approximate.
Scale 1/4" = 1' 0"