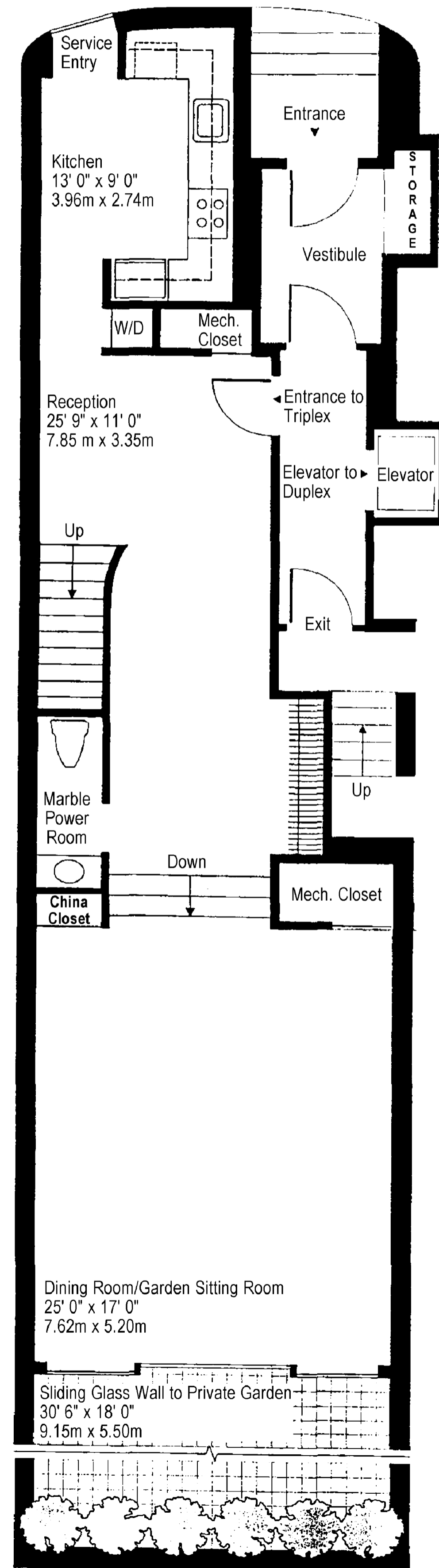


GROUND LEVEL

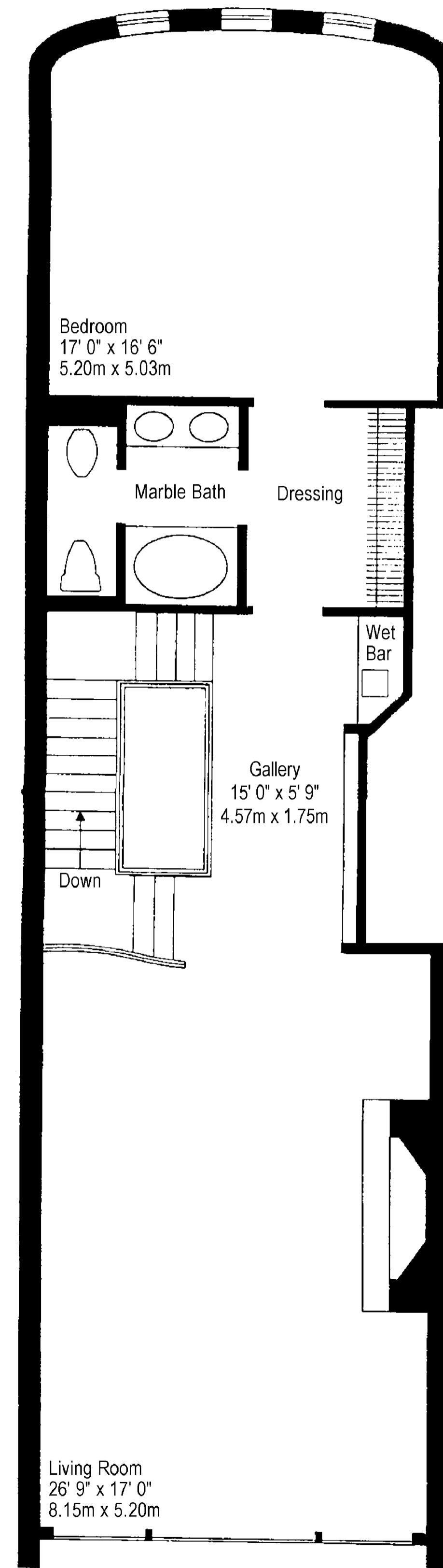
Formal reception room for gracious entertaining. Opulent, sunken dining room/garden room with wall of windows. Sliding glass doors to private rear garden with cobblestone patio, planting areas and screening walls. Large kitchen with separate service entrance, custom cabinets, generous counter space, ceramic tile floor and all deluxe appliances. Guest powder room of imported marble.



Private garden is not shown to full size

SECOND LEVEL

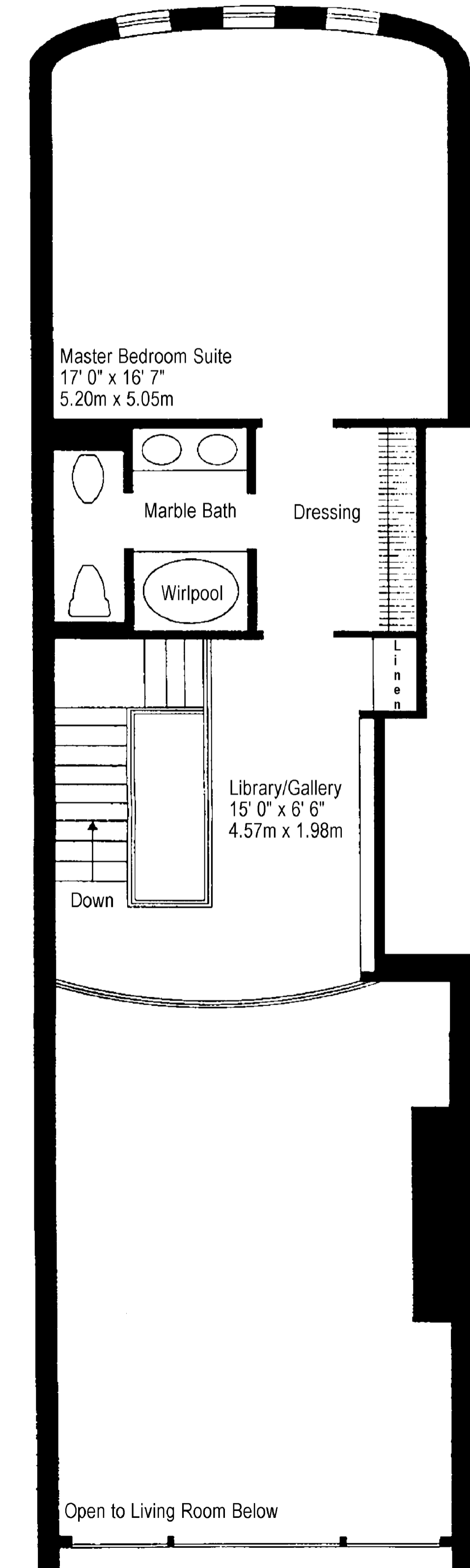
Grand living room with soaring 17-foot ceiling, full-height windows and oversized wood-burning marble fireplace. Gallery equipped with wet bar and special lighting. Gracious bedroom suite plus dressing area. Elegant, imported marble bath with dual pedestal sinks, oval tub, separate water closet and bidet.



All dimensions are approximate
Scale: 1/4" = 1' 0"

THIRD LEVEL

Library/gallery and balcony with sweeping view of living room and garden. Stately master bedroom suite plus dressing area. Elegant, imported marble bath with dual pedestal sinks, oval whirlpool tub, separate water closet and bidet.



THE SOLOW TOWNHOUSES
TRIPLEX A

Floor plans represent typical triplex layout for townhouses 222, 226, 230, 234 and 242 East 67 Street.
3100+/-Square Feet